

MONTHLY



Coventry & Nuneaton
METHODIST CIRCUIT

Circuit News

February 2025

Save The Dates!!

Sunday 13th April 2025 Circuit Service

3pm at Coventry Central Hall, with music from The Coventry City Of Culture Orchestra. This will be a Circuit Service to thank Rev Stephen Willey and Rev Kathryn Darby who have preached around the circuit with integrity and passion for the last 5 years.

Sunday 1st June 2025 Easter Offering Service

4.15pm at Earlsdon Methodist Church, further details to follow

Bedworth and Ryton Methodist Churches

During December members from Bedworth Methodist Church and Ryton Methodist Church gathered to carol sing in Bedworth Tesco. They raised £600 for Air Ambulance.



Advanced Safeguarding Training

There will be an Advance Safeguarding training course taking place in our Circuit on Saturday, 14th June.

The venue is still to be finalised but will probably at one of our Coventry churches. Please can you contact Keith Drinkwater if you would like to attend on this date. keithdrinkwater@talktalk.net

Vacancy at St. Mary's Church at Temple Balsall

The Foundation of Lady Katherine Leveson at Temple Balsall is seeking a Parish Administrator to provide administrative and secretarial support to the parish.

Please contact mastersoffice@leveson.org.uk for more information.

by Friday 28th February at 12 Noon.

Support Needed!

If you have any experience of GDPR in your work environment and would be able to offer support to the circuit, please can you get in contact with the office office@covnunmethodist.org.uk



Carol's father was diagnosed in 1982 with Alzheimer's as were a number his siblings in the 1980s. Her work of identifying research teams to look at her family really began in earnest during our time at Keyworth (1988-1997). The actual genetic fault was discovered in 1991.



**The Jennings vs Alzheimers article by
Rev Dr Stuart Jennings
2024 Grierson Award for the Best
Science Documentary**

The Grierson Awards are the UK's biggest documentary event, honouring innovative and exciting documentaries from around the world.

**Best Science
Documentary**

The Jennings vs Alzheimer's

Expectation Entertainment for BBC

Niamh Kennedy, Colin Barr, Arthur Cary, Rick Barker, Emma Lysaght, Jess Austin

Balancing science communications and showcasing ordinary family life, jurors praised this remarkable film for exploring memory in new, creative ways. Thoughtful contributors, beautiful archive and an innovative approach to storytelling made for an immersive experience for the audience, as the microcosm of one family's history reveals an extraordinary story of medical revolution.

Documentary team with Rev Dr Stuart Jennings at the award ceremony

Coventry Central Hall Car Parking

The Barracks car park is now closed so if you are going to Central Hall the nearest, cheapest car park is now Salt Lane multi storey. There are two ground level car parks opposite on New Union St - Manor House Drive and the Registry office car park but they are more expensive. If preachers contact the Senior steward they can be given a code for the church car park although it is very awkward especially if their car is a big one!

Two Crosses Of Nails
One In Coventry To Remember The Blitz
One In Wroclaw To Remember Auschwitz

A trip is being planned this autumn to walk in the footsteps of Edith Stein, Sister Benedicta of the Cross. It will visit the main places associated with her life in Breslau-Wroclaw with an optional visit to Auschwitz.

Wroclaw is a delightful and fascinating place and Coventry University has opened a campus there in a city which mirrors the experience of Coventry. As well as visiting the key places associated with Edith Stein (and Dietrich Bonhoeffer who was also born there) there will be times of reflection on how their stories speak to us today.

Follow the story of Edith Stein from her birthplace in breslau, her nurturing in the white stork synagogue, her brilliance as a philosopher, conversion to carmelite sisterhood and willing embrace of death in auschwitz 'to be with my people'.

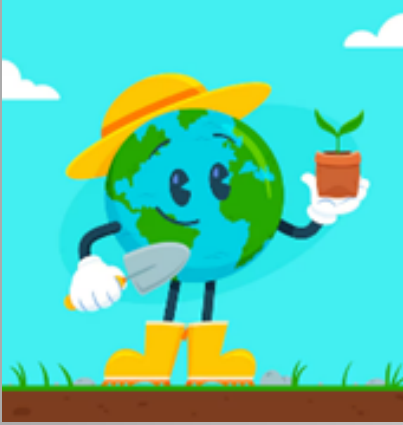


Flight from Birmingham on Monday 29th September (date of St Michael associated with a cross of nails in both cities) to Thursday 2nd October (date of Yom Kippur). Further details from Pauline Warner, Free Church Chaplain at Coventry Universityac6476@coventry.ac.uk

Lunar New Year celebrations at Nuneaton Methodist Church



On 1st Feb over 100 local Hong Kong community members came to celebrate the Lunar New Year at Nuneaton Methodist Church. There were cultural performances, interactive games and arts, speeches (including from the Mayor and Councillor Sue Markham) and food to share. Thanks to some wonderful volunteers and to George Oworae Danquah and Fiona Lam, community development workers, for arranging this event at which a welcome was given to residents arriving from Hong Kong, new partnerships were developed and new friendships were made.



Eco News from across the Circuit

Our Green Gathering met in January and share with you plans and hopes for 2025 in our circuit.

Calling Knitters! We hope to get involved in knitting dishcloths to give out, encouraging reusable and washable alternatives to 'throwaway'.

Jill Marsh will have more information to share with Circuit meeting. Look out for a pattern and 'cotton' wool sources on the way.....

Church Gardens Many churches have patches of land large and small. We look forward to seeing photos / video clips of what you are doing.

Great Green Giveaway Time now to plan for the spring and summer! What about a stall inside or outside your church offering free seeds, small plants, 'help-yourself herbs', surplus fruit and vegetables? Giveaway the excess you don't need from BOGOF or cheap deals in the shops. A great way to show the community that we care about the earth and about them.

Less Meat Lent Could you commit to one meat free day (or more) a week during Lent? Do you have favourite vegetarian recipes you could share around your church / the circuit?

The **Methodist Connexion** has an online Eco-network. The next meetings are on February 10th and May 21st. It's easy to register, just follow the link below

https://www.eventbrite.co.uk/e/methodist-church-eco-community-network-tickets-1113977429479?aff=eivtefrnd&utm_share_source=listing_android

Circuit outdoor worship and family gathering As last year, an event will be held in Coombe Abbey grounds in the summer. Date to be announced!

Does your church have an **Eco-Champion**? Do let us know. We would love to hear from every church, however much or little you feel able to do.

We hope you are excited by one or all of these ideas!! Keep looking out in Circuit news for more information as the year progresses

And do get in touch.

Lois Talbot (loismtalbot@gmail.com)
Circuit Eco-Rep

Connexional News



Wholehearted Monthly

Registration for wholehearted monthly – a free, experimental online gathering for mission hosted by the Methodist Church in Britain – has launched and already ballooned to 350+ registrations for our first gathering in March!

In addition to the fabulous speakers, each month break-out conversations will be facilitated for diverse groups around justice, children's and youth work, prayer and spiritual practice, theology, pioneering, evangelism, church growth, global relationships, and more. If you're interested in facilitating a space or if you have a suggestion for a future speaker, just let us know.

'wholehearted monthly' mission series launches. The Methodist Church is thrilled to announce the launch of wholehearted monthly, a free, online mission series starting in March on the second Tuesday of each month, 7:00pm – 9:00pm GMT/BST. People from all traditions and countries are welcome.

What is wholehearted monthly? Think community organising rally meets immersive spiritual laboratory. It's for anyone committed to a vibrant friendship between "Church" and "World" – and a desire for both to flourish. Each month, testimony from local innovators, input from a renowned guest speaker, and wisdom-sharing in networks around Gospel justice, inclusion, evangelism, and growth.

Speakers for the first three gatherings are now public!

Nadia Bolz-Weber is a best-selling author, public theologian and pastor, and is the founder and church planter of House for All Sinners and Saints. (Tuesday 11 March)

Rowan Williams is a theologian, poet and former Archbishop of Canterbury, and is author of fifty books on literature, politics, and being Christian. (Tuesday 8 April)

Chine McDonald is a writer, broadcaster and author, and is Director of Theos, the religion and society think tank. (Tuesday 13 May)

Get your seat at the online table here:

<https://www.eventbrite.co.uk/e/wholehearted-monthly-tickets-1082365166349?aff=evangelismgrowth>

Hosted by The Methodist Church in Britain and open to all.

Bible Month Training Day

Bible Month is an annual campaign that celebrates Scripture by inviting the whole Methodist Connexion to feast on one particular book of the Bible together. [Bible Month – The Methodist Church](#)

We have been invited by South Warwickshire Methodist Circuit to join with them on 15th March 2025.

The Bible Month Training Day will be based on John's Gospel

Date: Saturday 15th March 2025

Time: 10.00 am – 3.00pm

Venue: The Activity Room, Kenilworth Methodist Church, Priory Road, Kenilworth CV8 1LQ

The study day will take the form of a live stream broadcast with local face to face discussion. Please bring your own lunch. Drinks will be provided.

There is parking at the church and paid parking at the railway station 100 yards away.

It would be helpful if people registered beforehand with Eventbrite at [BM25-Training.eventbrite.co.uk](https://www.eventbrite.co.uk) but this is not crucial. If people can attend for only part of the day, that is acceptable.

Local contact: Russell Blackwell 01926 257589
russell.blackwell@talktalk.net

Study Guide available: Purchase the "30 Days with John" booklet at preachweb.org/biblemonth

Information received from The District Office

Residential Retreats at Green House at Barnes Close.


This year we're running six residential retreats – three led Encounter retreats (Lent, Psalms, Advent) and three Time & Space retreats (which are just that). For people wanting further details go to our website <https://greenhouseatbarnesclose.org.uk/events/>

Lent Encounter Retreat
Rest. Reflection. Time with God

24 March 6pm - 27 March 3pm 2025
A led and catered 3-night retreat
Inclusive and neurodiversity affirming

2025

Upcoming Retreats.



MARCH 24-27	LENT ENCOUNTER RETREAT Entering into some formative moments in the life of Jesus	SEPT 22-25	TIME AND SPACE Rest, reflect, renew
MAY 19-22	PSALMS OF ENCOUNTER Thirst, lament, trust and new life in the Psalms	OCT 20-23	TIME AND SPACE Rest, reflect, renew
JUNE 2-5	TIME AND SPACE Rest, reflect, renew	NOV 24-27	ADVENT ENCOUNTER RETREAT Becoming present to the season before the rush sets in

Total cost per person	Standard	En-suite
discount for a shared bedroom	Private bedroom, shared bathroom facilities	Private bedroom and bathroom
Supporter if it forward so others can come	£300	£320
Standard The price we need	£250	£270
Concession Because we want you here	Contact heten@greenhouseatbarnesclose.org.uk	

To book or enquire 01562 710278 or email bookings@greenhouseatbarnesclose.org.

For more information see 'Events' on our website www.greenhouseatbarnesclose.org.

A place for rooted faith and flourishing communities

Easter Pilgrimage 2025 – 21st to 26th April.

People linked to either the Wolverhampton & Shrewsbury or Birmingham District are invited to join a “pilgrim community” of up to 12 people this Easter week on a route in the beautiful South Shropshire countryside, gathering at Ludlow on the evening of Easter Monday and finishing at Church Stretton the following Saturday. It is possible to get to both the start and the finish by train. During this six day experience, we will walk, pray and eat together and share sleeping space in a number of Methodist Churches. Luggage (including your airbed / camp-bed and bedding) will be transferred each day. Mileage will be around 7 to 11 miles, taken at a gentle pace on rural routes that may include stiles. We share cooking within the group.

This is now a “tried and tested” formula which has been greatly appreciated by previous pilgrims. Being willing to be part of a short-term community is far more important than being super-fit, providing you can manage a modest amount of walking over a number of consecutive days, followed by nights on a church floor! The pilgrimage will be led by a small team of previous pilgrims, including Rachel Parkinson, Chair of Wolverhampton & Shrewsbury District.

If means allow, we suggest a contribution of £120 to the kitty to cover food, accommodation and luggage transfer. Unfortunately, the living arrangements mean we cannot include children and young people, though they will be welcome to join us as accompanied day walkers (details later).

Numbers are strictly limited so if you are interested in joining the group this year, please don't delay – contact Richard Lockley in the W&S District Office:

admin@wsmethodist.org.uk